

Europaplatz

HEIDELBERG



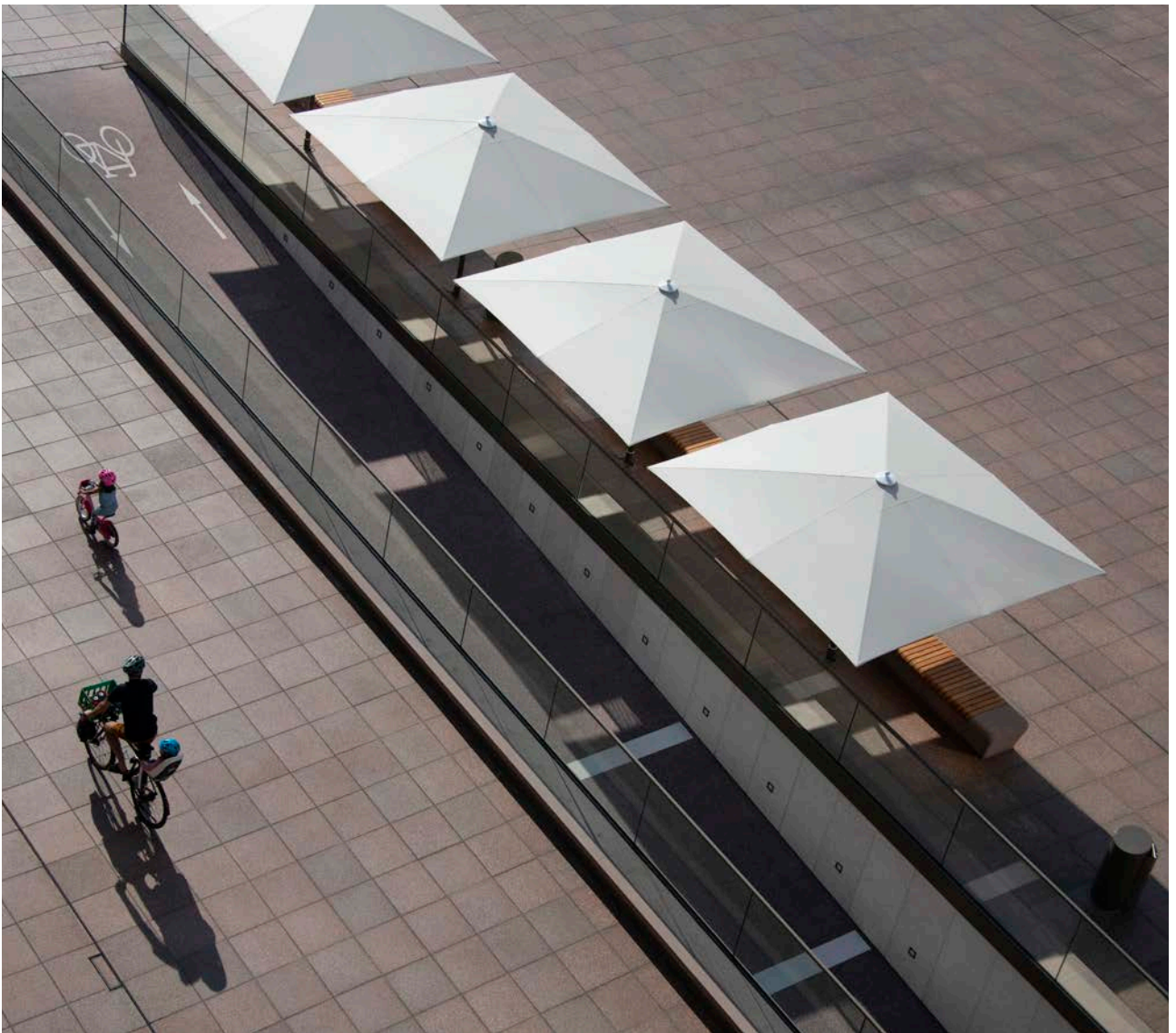
We had agreed to meet at the Europaplatz, it was our second date. I was sitting on the side of the colonnade in one of the many cafés. I had a good view of the square. Behind me the austere architecture, in front of me the relaxed playfulness of the circular tree isles. Then I saw my date by the group of trees. You know, right by the tall, climate-friendly trees with the broad, shady crowns. I was about to call out to her when I saw something move behind her – a man took her by the hand and pulled her with him to the bench encircling one of the trees. Just when grimly, I wanted to pay and leave I heard my name being called. The call came from my right. There, from near the hotel past the water fountains a beautiful upright figure was walking toward me. I realised in that moment that what I needed wasn't a new date but new glasses.

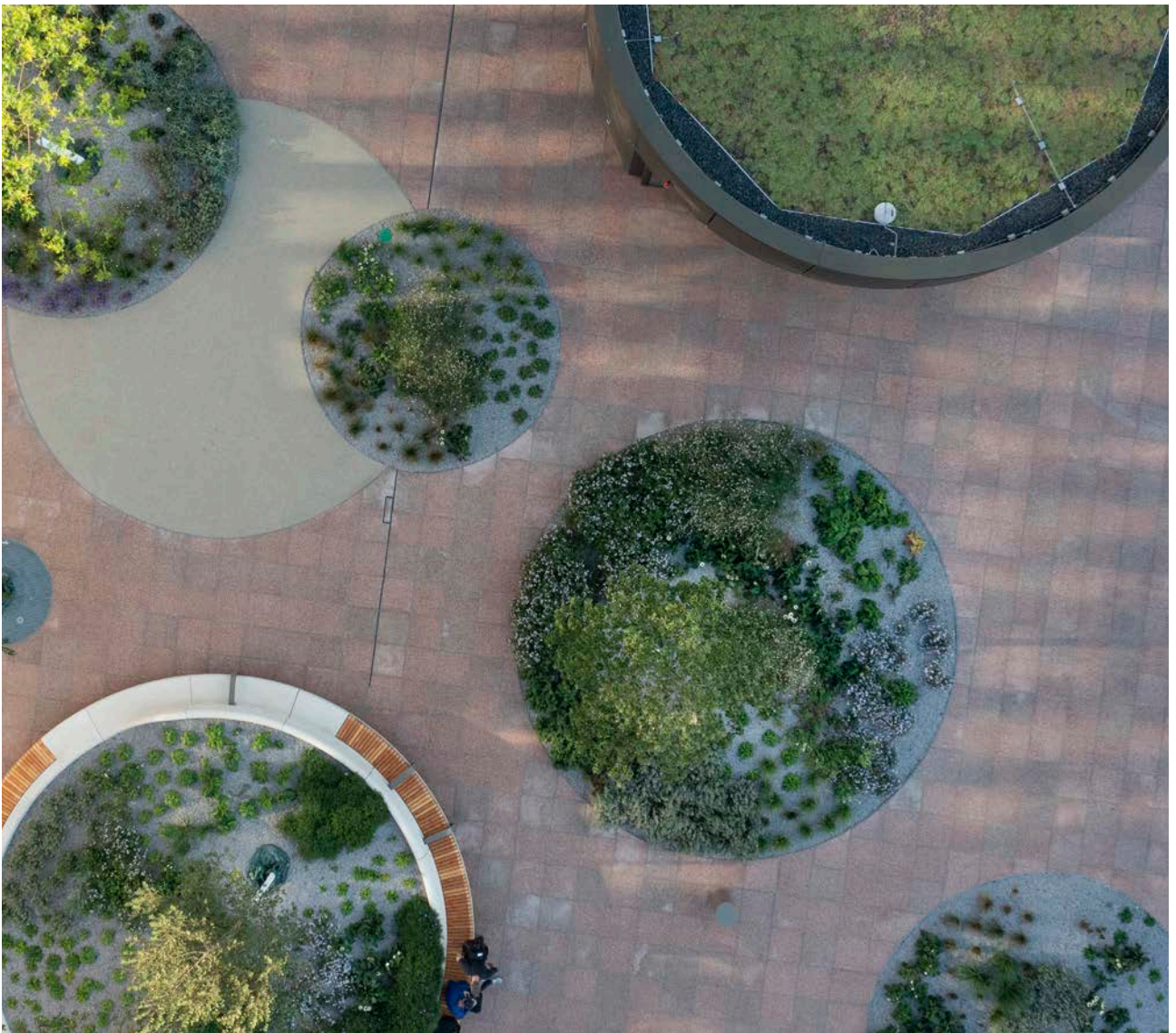
A modern urban district is being built to the south of Heidelberg's main railway station, with the Europaplatz as its vibrant centre, surrounded by a modern ensemble of residential, office and commercial buildings. The open urban square with embedded decorative elements made from polished mastic asphalt offers ample space for events and outdoor seating areas. The west and north it is lined by scattered trees of different types standing in circular decorative flowerbeds with herbaceous plants and grasses. A gentle ramp is integrated into the square, allowing cyclists access to underground parking with 1,600 spaces for bicycles. The adjacent Foyerplatz, a little distance away to the northwest from the Europaplatz, has its own quieter atmosphere, with a fountain which by its circular shape alludes to the flowerbeds on the main square.

POLA's concept for the design of the Europaplatz was selected as the best out of 24 entries submitted in an open-space design competition. There was extensive citizen involvement, many of whose suggestions were included during the formulation of the competition task. What is being created is an attractive urban square that makes for a pleasant visit and is well connected with public and individual transport.











Project data

Project Europaplatz | Main square and adjacent squares

Location Heidelberg, Baden-Württemberg, GER

Client DSK GmbH & Co. KG (German Urban and Property Development Company)
Gustav Zech Foundation Management GmbH

Partner Winking Froh Architekten, GILDEHAUS LANKENAU

Planning period 2018-2022

Construction period 2022-2023

Completion 2023

Services Planning and construction management (phases 1-8)

Size 11.500 m²

Costs 4 million € net

Competition 1st Prize, 2018

Images Hanns Joosten

POLA

POLA Landschaftsarchitekten GmbH

Neue Schönhauser Str. 16
10178 Berlin

T +49 (0)30-240 00 99-10

F +49 (0)30-240 00 99-11

Hongkongstr. 7

20457 Hamburg

T +49 (0)40-807 92 12-55

F +49 (0)40-807 92 12-15

mail@pola-berlin.de

www.pola-berlin.de

Press enquiries: pr@pola-berlin.de