

Planten un Blumen

HAMBURG



POBA

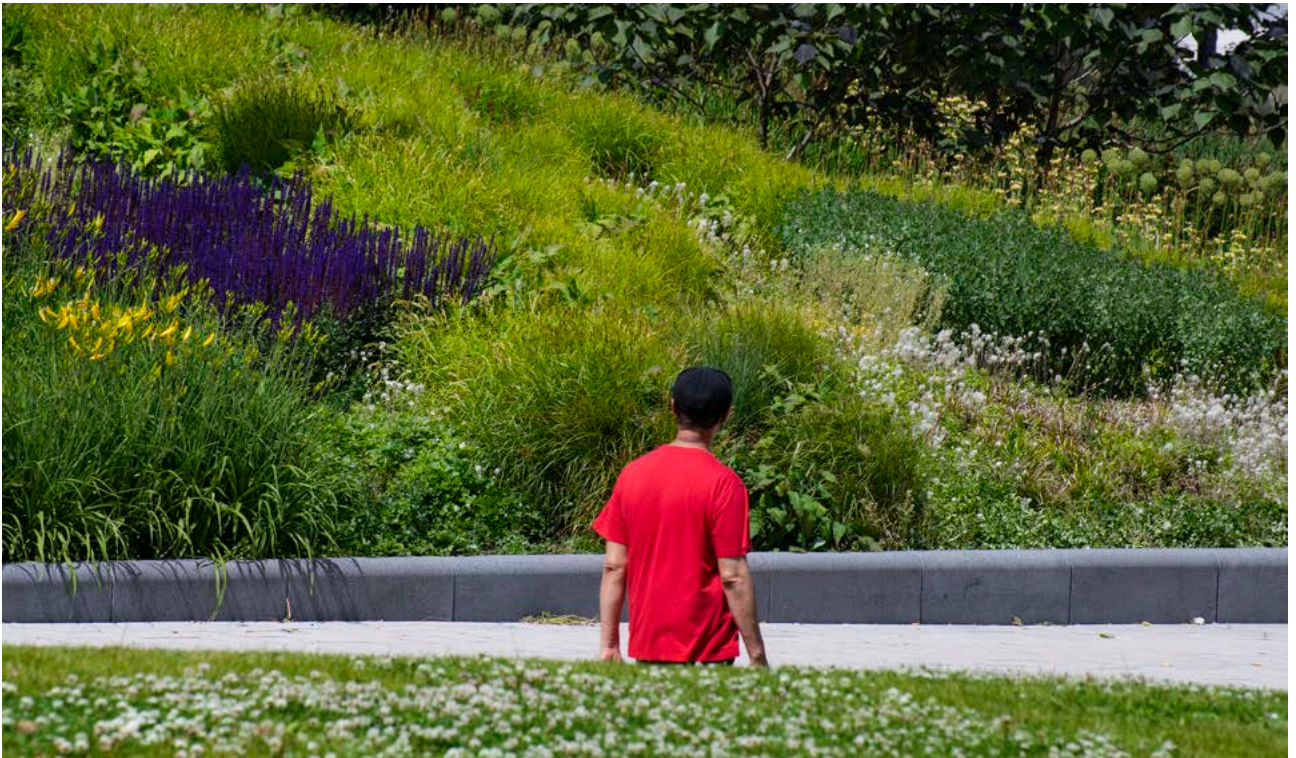
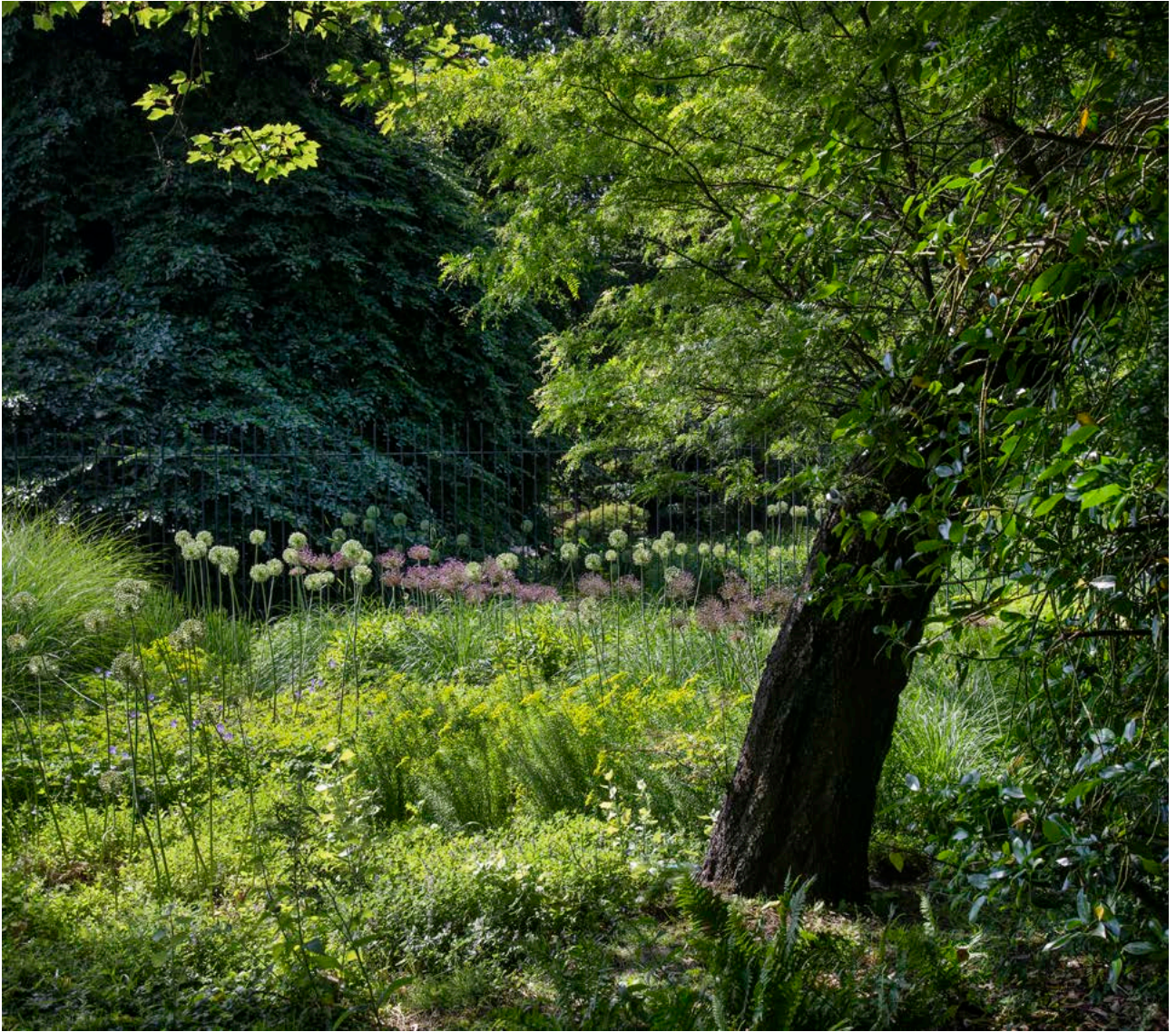
*I'm at the mercy of my watch,
the train is late! I must hurry
now! Across the steep pedestrian
bridge and through the park, into
the city. Wait a second, what
happened here? Where's the
bridge? Why does the park start
right behind the railway station?
Did I get off in the wrong place?
No, the old trees and swamp
cypresses on the ramparts are still
there! I'm in the right place, but
now those tall trees are standing
right in front of the station. All of
it is new and still familiar. Or was
it always like this? Is my memory
playing tricks on me? I must hurry,
I'm thinking, but the lovely calm
of the park engulfs me. Blossoms
everywhere! It's spring. I'm sitting
down on the long bench in front
of the station. I think I'll take
my lunch break now, right after
breakfast.*

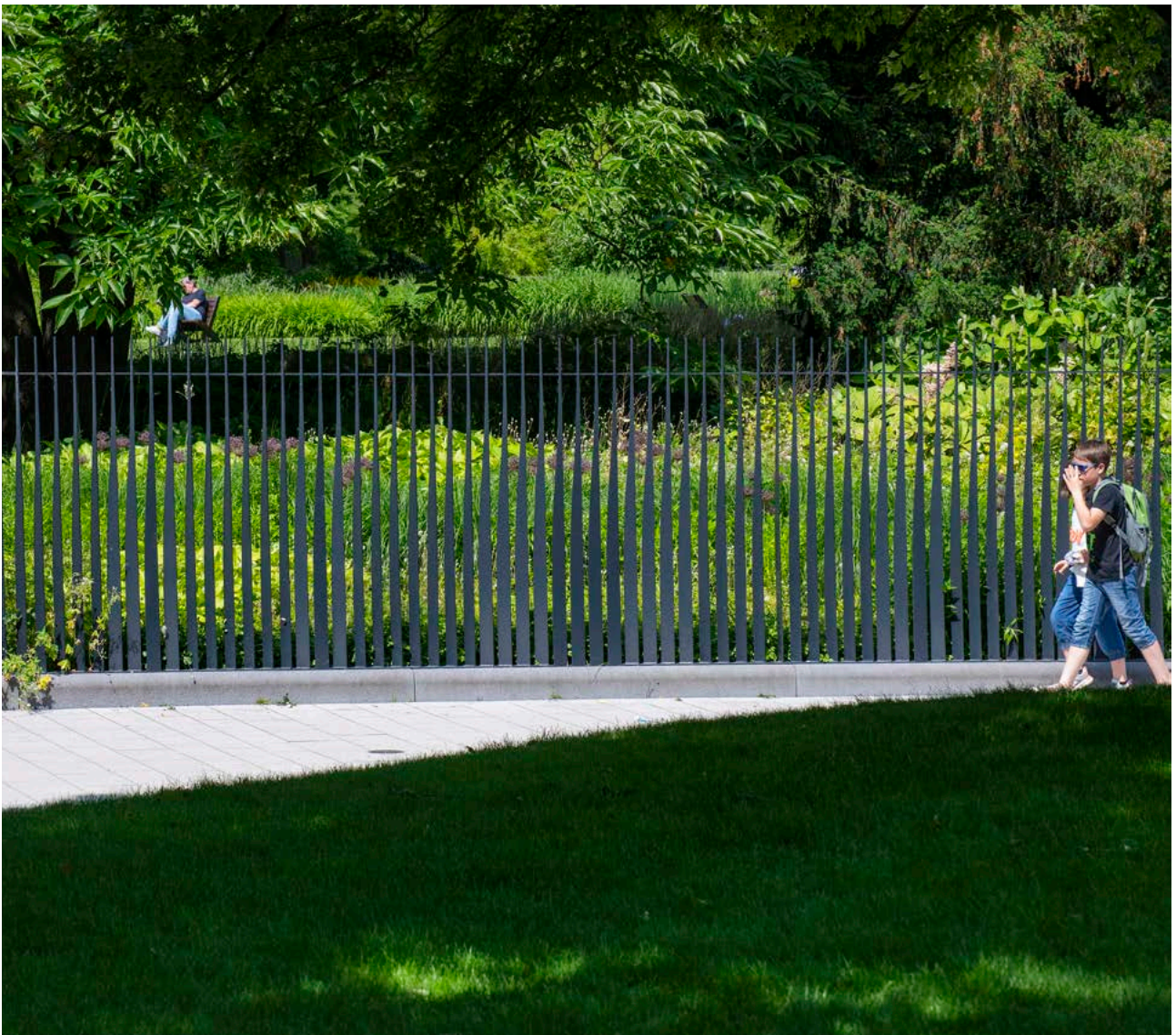
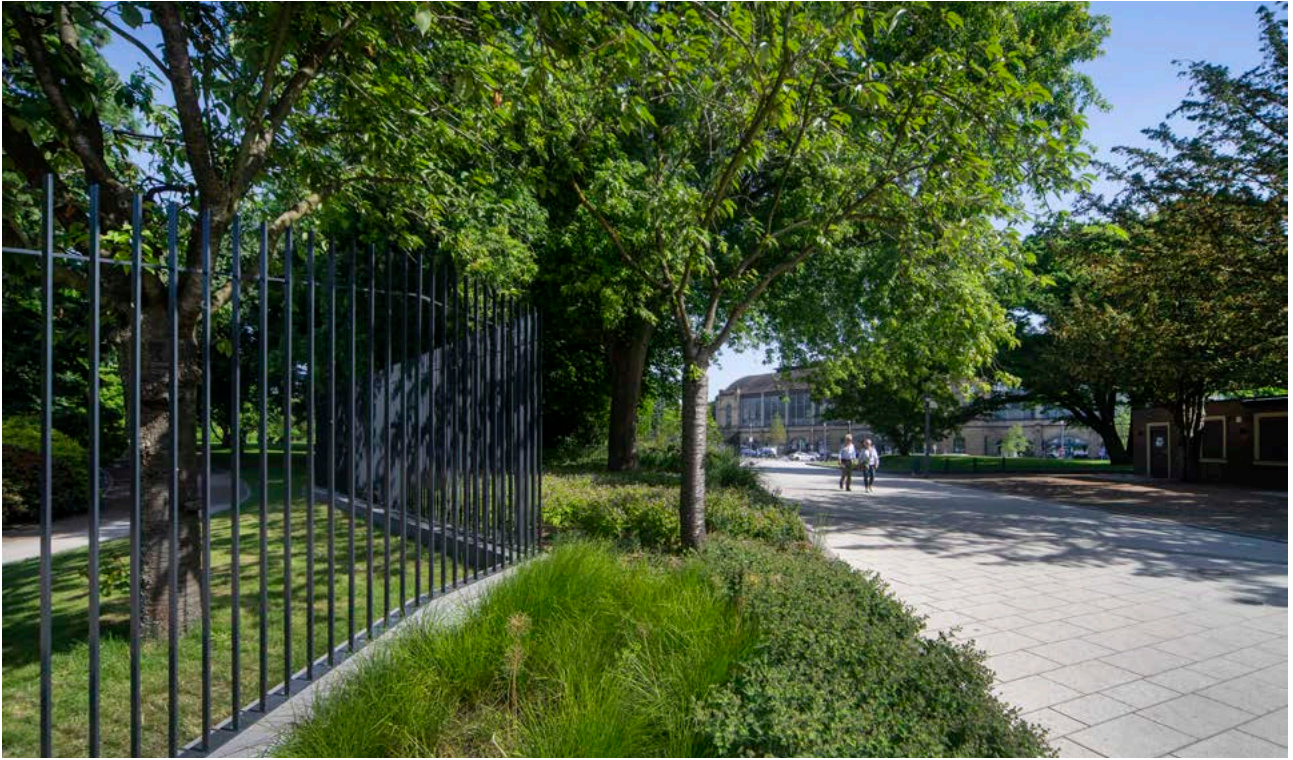
In the context of the revitalisation of the Congress Center Hamburg (CCH), the adjacent park area was expanded and partly redesigned. Marseiller Street between the subdivisions "Planten und Blomen" and "Alter Botanischer Garten" was dismantled and added to the park. Where a dark concrete trough used to be is now a sequence of bright, inviting squares and green areas with a pedestrian and a bicycle path. The redesign of the adjoining Dag-Hammarskjöld-Platz near the Dammtor railway station involved the removal of a 6-metre-high supporting wall to allow an unobstructed view of the Alter Botanical Garden, thus making the square the new "antechamber" of the park.

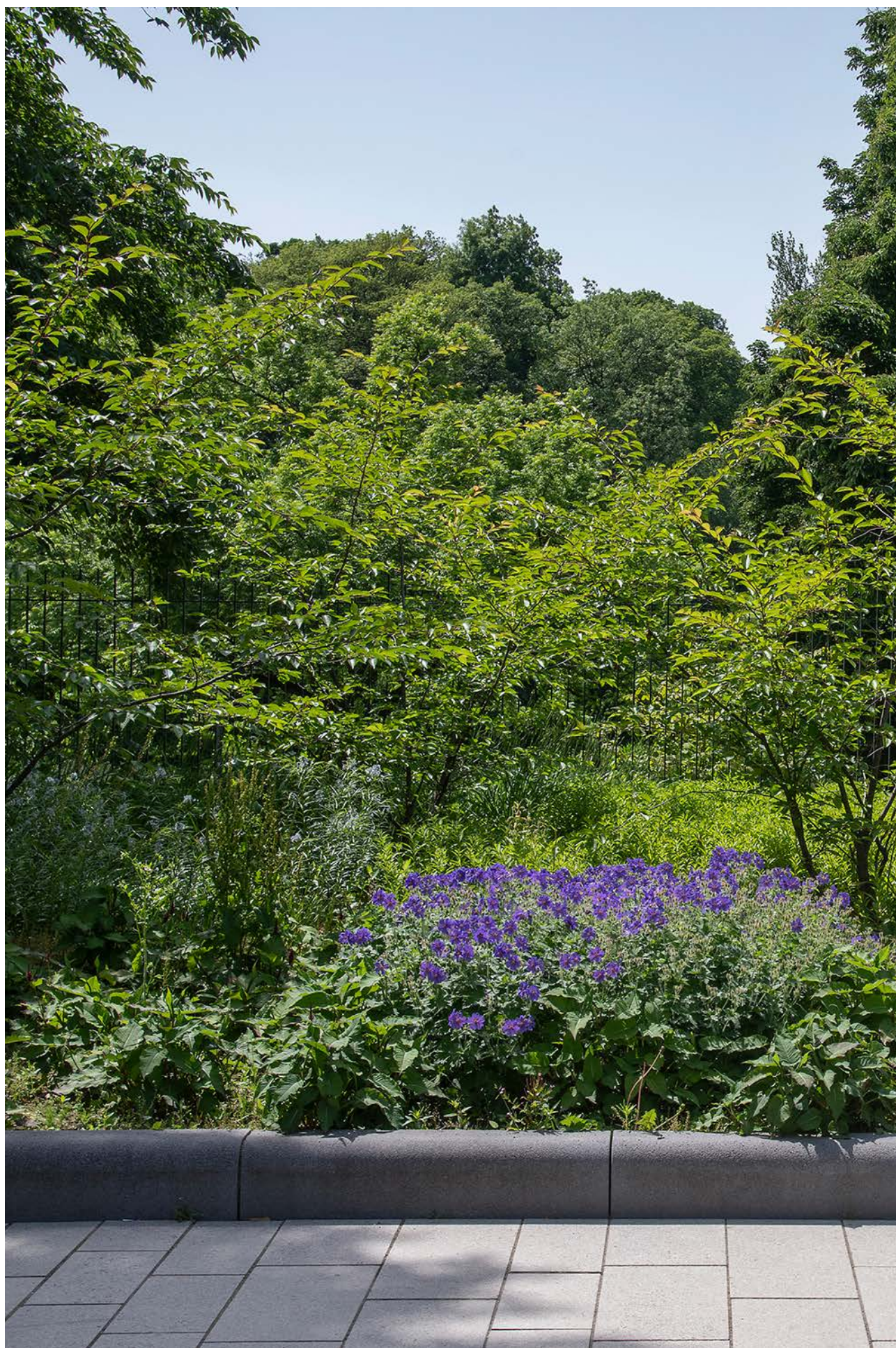
The newly created zone establishes a connection between the railway station and the congress centre, while fitting in naturally and unpretentiously with the historic park. It creates various possible lines of sight and joins the existing elements together, creating a splendid ensemble.

Excerpt from the jury report (09/12/2015):

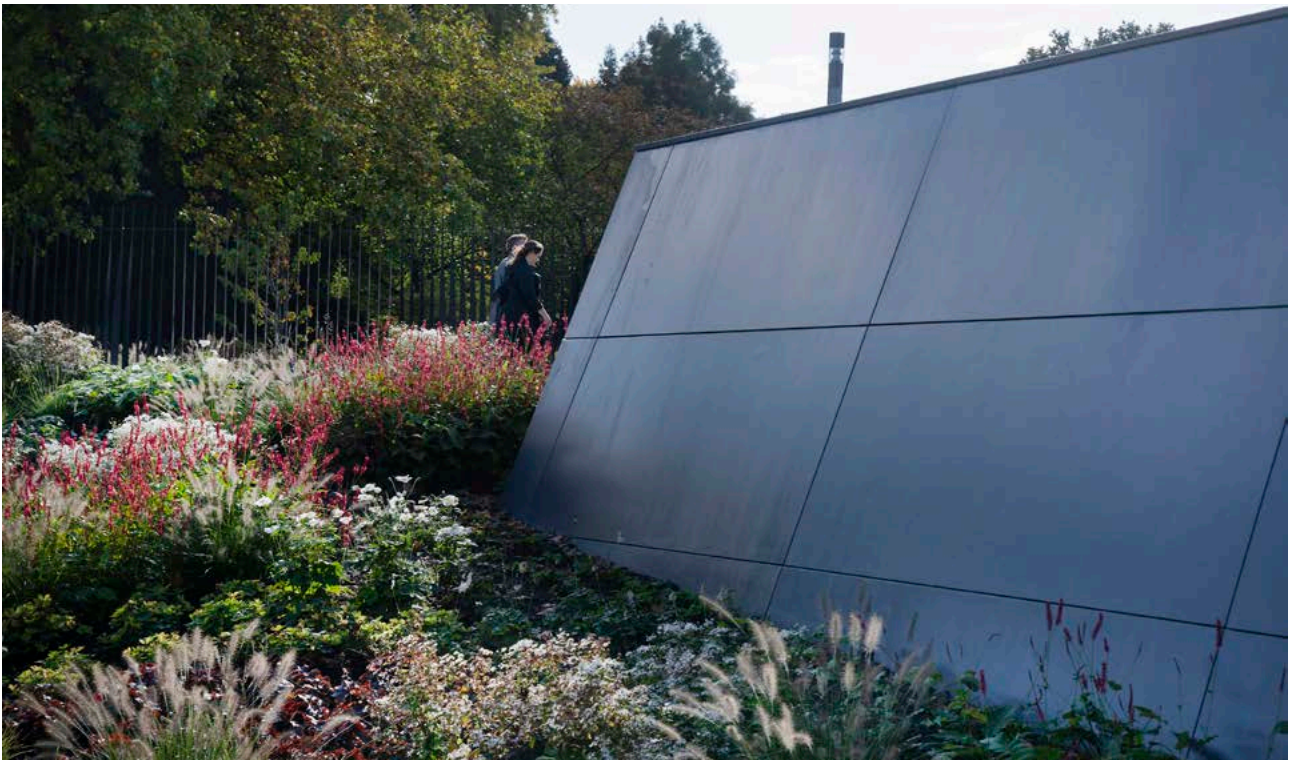
This design treats the creative diversity of the two listed park sections with very prudent, modest humility. In terms of urban planning, this conceptual approach is highly convincing due to its simplicity and clarity. The design manages to connect the parks and the adjoining squares with a few simple gestures.



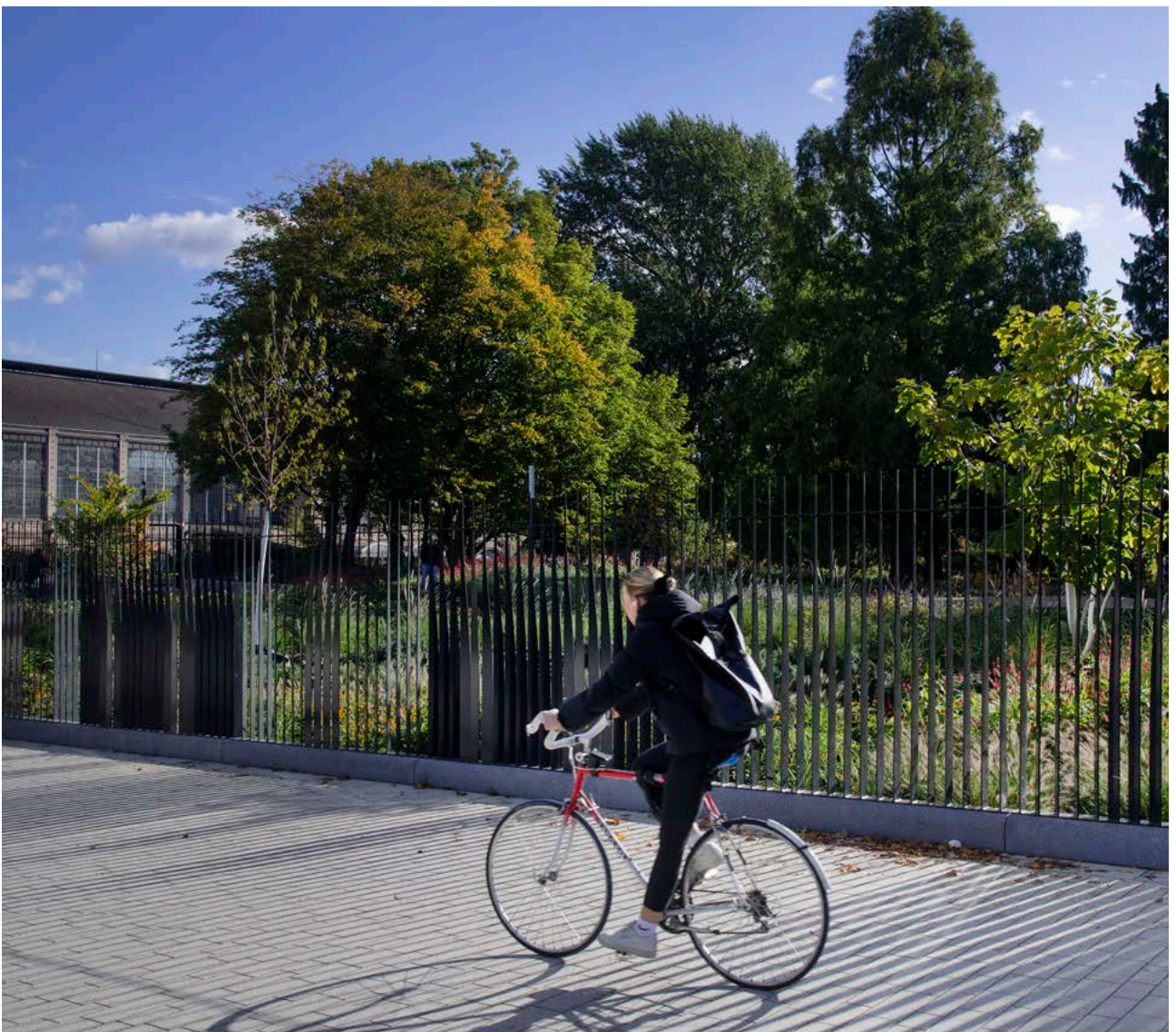
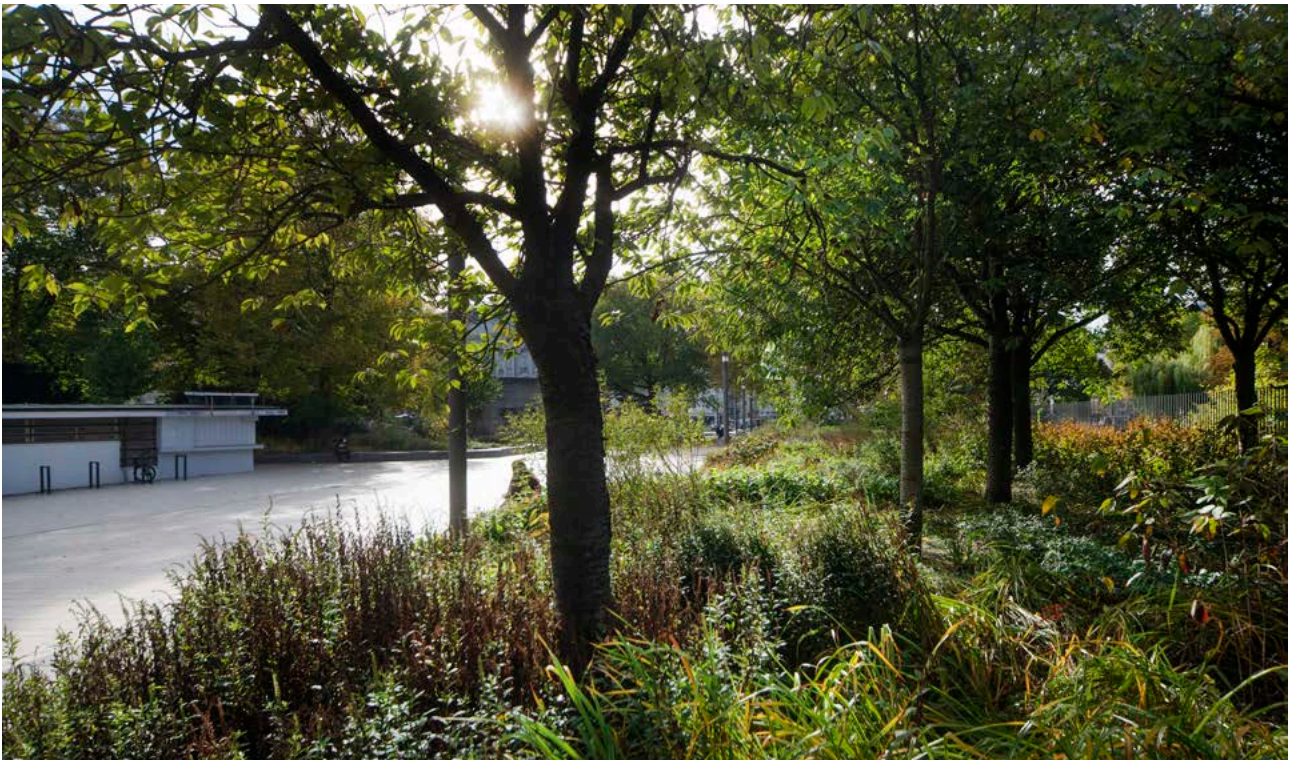


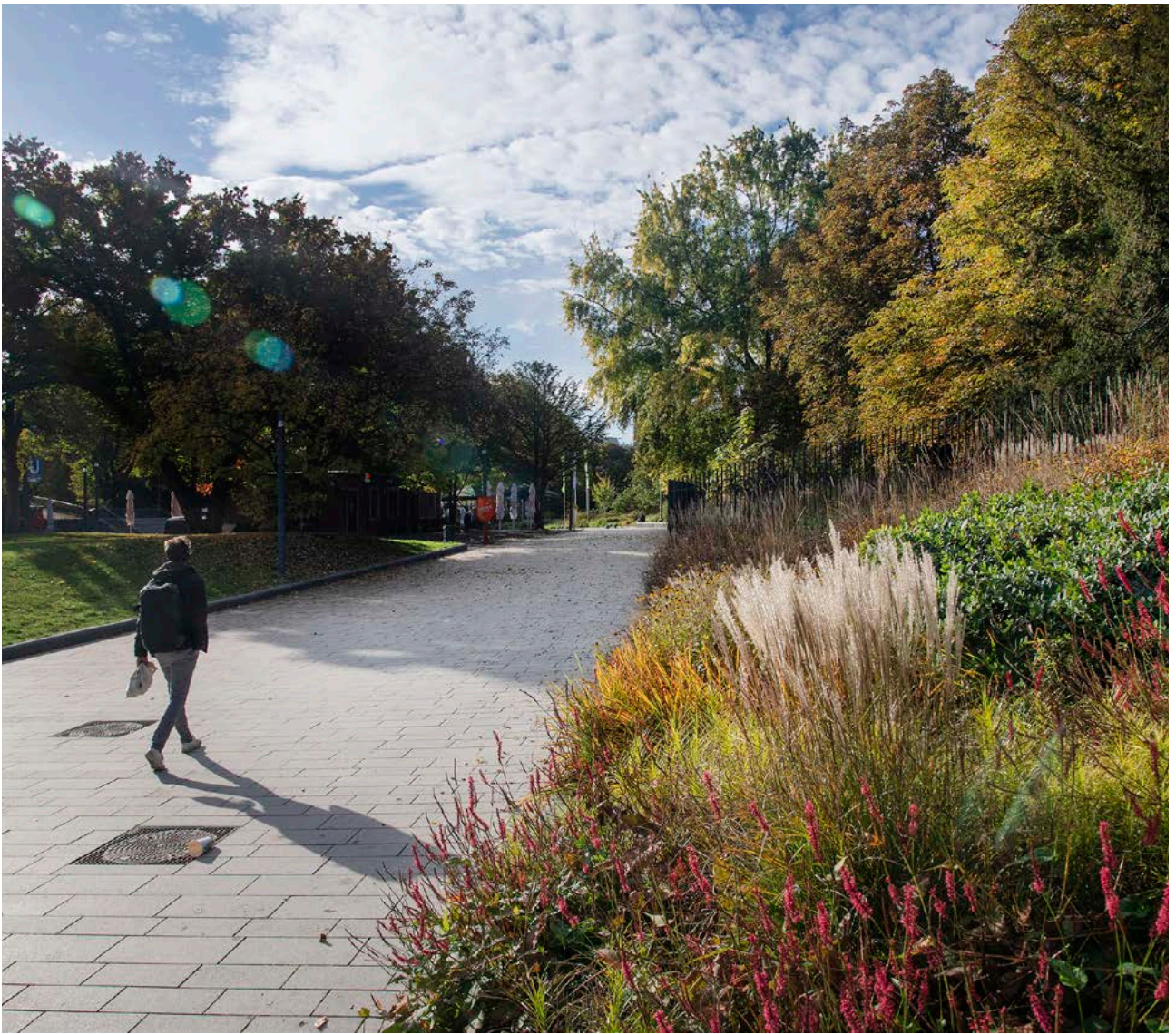














Project data

Project Extension Pflanzen und Blumen | Redesign Dag-Hammarskjöld-Platz

Location Hamburg, GER

Client Free and Hanseatic City of Hamburg

BUKEA - Ministry for the Environment, Climate, Energy and Agriculture Hamburg-Mitte District Office

Planning period 2015-2021

Construction period 2021-2023

Completion 2023

Services Planning and construction management (phases 1-3, 5-8)

Size 24,500 m²

Costs 8.5 million € net

Competition 1st prize, 2015

Images POLA



POLA Landschaftsarchitekten GmbH

Neue Schönhauser Str. 16
10178 Berlin

T +49 (0)30-240 00 99-10

F +49 (0)30-240 00 99-11

Hongkongstr. 7

20457 Hamburg

T +49 (0)40-807 92 12-55

F +49 (0)40-807 92 12-15

mail@pola-berlin.de

www.pola-berlin.de

Press enquiries: pr@pola-berlin.de