

TURBINENWERK

MANNHEIM

POBA

*How could all of this happen?
They wondered,
dreamily gazing upward, hands in
their pockets,
their thoughts set on the coming
day.
The elephant wasn't pink, there
was no horse on the stage,
yet everyone applauded.
They began to ask questions,
whose answers they already knew.
Everything was bright and easy.
Are those voices in the
background?
Distant honking, like in the
morning at their workplace in the
turbine factory.*

*Did someone call their name?
Jenny! Jenny, Jenny, Jenny!
Confused, they opened their eyes.
Blinding sunlight. „Well, it looks
like someone fell asleep,“
their colleagues laughed.
Amid warehouses, office towers,
and old factories,
they imagined themselves
elsewhere entirely,
in their reclining chair on the hill
amid swaying fields of grass
where turbines once stood,
waiting for their purpose.
That's where they liked to spend
their lunch break.*

The 18-hectare former industrial site „Turbinenwerk“ in the middle of Mannheim's Käfertal district, which is currently being transformed into a high-quality office and commercial area, is home to a 450-meter-long green corridor. This project marks the return of nature to a densely populated post-industrial landscape.

The green corridor does not aim to mimic nature but rather draws inspiration from the natural elements found in Mannheim's surroundings, such as the sand dunes of the Dossenwald and the rich biodiversity of the Käfertal Forest. In this way, the green corridor becomes an identity-defining feature for Mannheim's turbine factory, offering people a recreational landscape in the heart of a modern working environment.

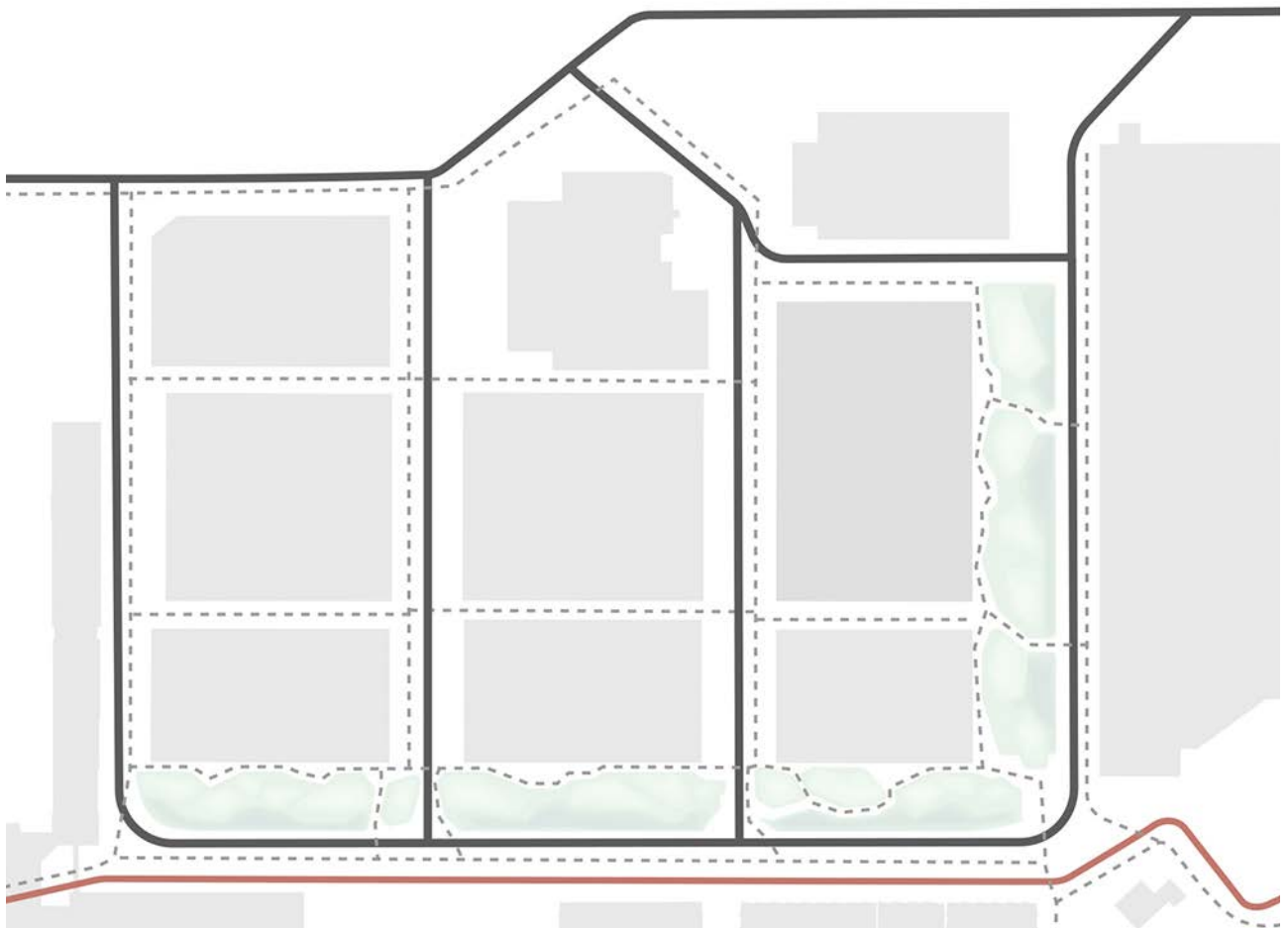
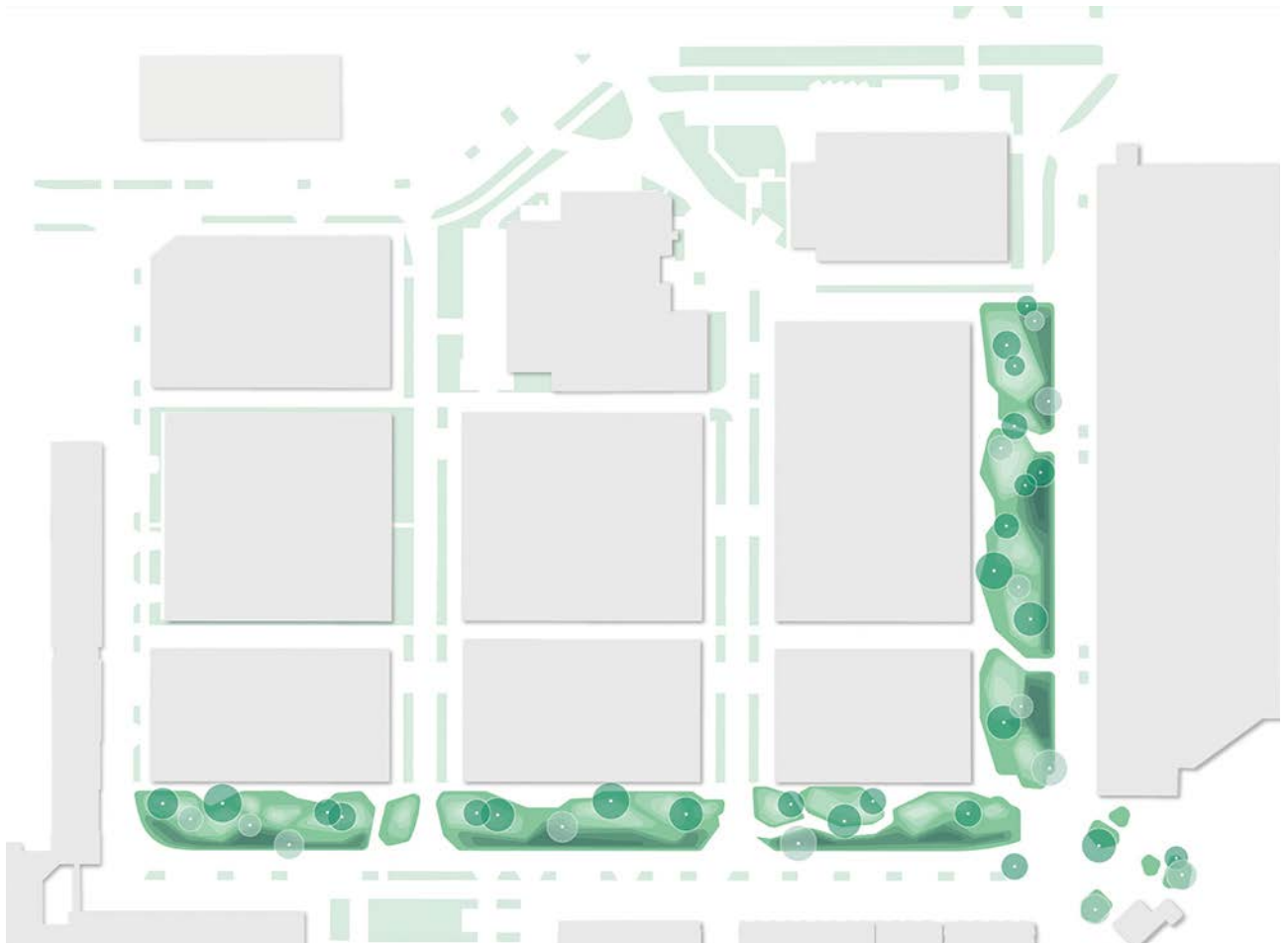
The creation of artificial nature provides a retreat with aesthetic appeal in the context of the ecological and social shift from a labor-centric society to one centered around meaningful interaction. This project embodies the concept of „life-work balance“ and strives to be an environmentally conscious urban design proposal.

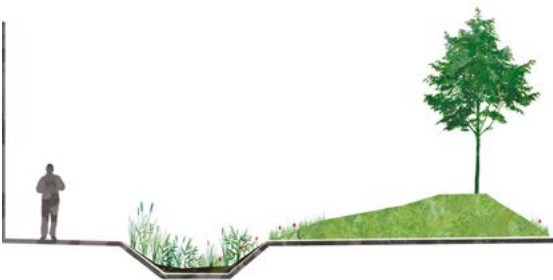
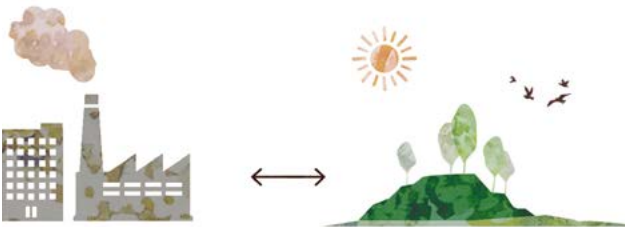
The two green axes along the former plant evoke historic ramparts of medieval town centers, acting as a fortress against the impacts of climatic changes. Numerous shade-providing trees enhance the microclimate within the turbine plant, set amidst a landscaped terrain featuring retention hollows and gentle hills adorned with tall prairie grasses. This not only fosters a pleasant atmosphere but also provides various sanctuaries for people, animals, and plants. By using species- and herb-rich seed mixes in the vegetation areas of the infiltration swales, special attention is paid to enhancing biodiversity and promoting ecological diversity throughout the neighborhood.

In essence, the green corridor at Mannheim Turbine Works serves as a model for integrating nature into modern inner-city work environments. It combines ecological sustainability, social recreation, and aesthetic appeal while emphasizing the importance of a balanced living and working environment in an era of social and ecological change.











Project data

Project Mannheim Turbine Plant

Location Mannheim, GER

Client Aurelis 52, Aurelis Real Estate Service GmbH

Planning period 2021 - Current

Services Planning and construction management phases 1-5

Size 14,103 m²

Competition 1st prize, 2021

Images POLA

POLA

POLA Landschaftsarchitekten GmbH

Neue Schönhauser Str. 16
10178 Berlin

T +49 (0)30-240 00 99-10

F +49 (0)30-240 00 99-11

Hongkongstr. 7

20457 Hamburg

T +49 (0)40-807 92 12-55

F +49 (0)40-807 92 12-15

mail@pola-berlin.de

www.pola-berlin.de

Press enquiries: pr@pola-berlin.de